

MONTHLY MEMBERSHIP PROGRESS REPORT

LOCATION INDIA

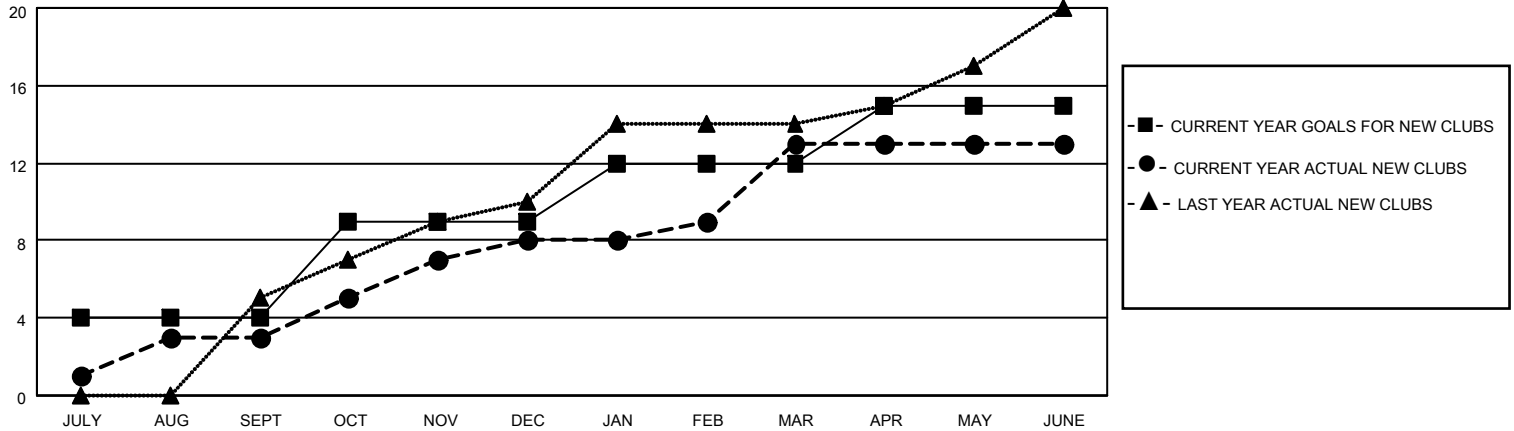
District 318 E

Results as of: 6/30/2023

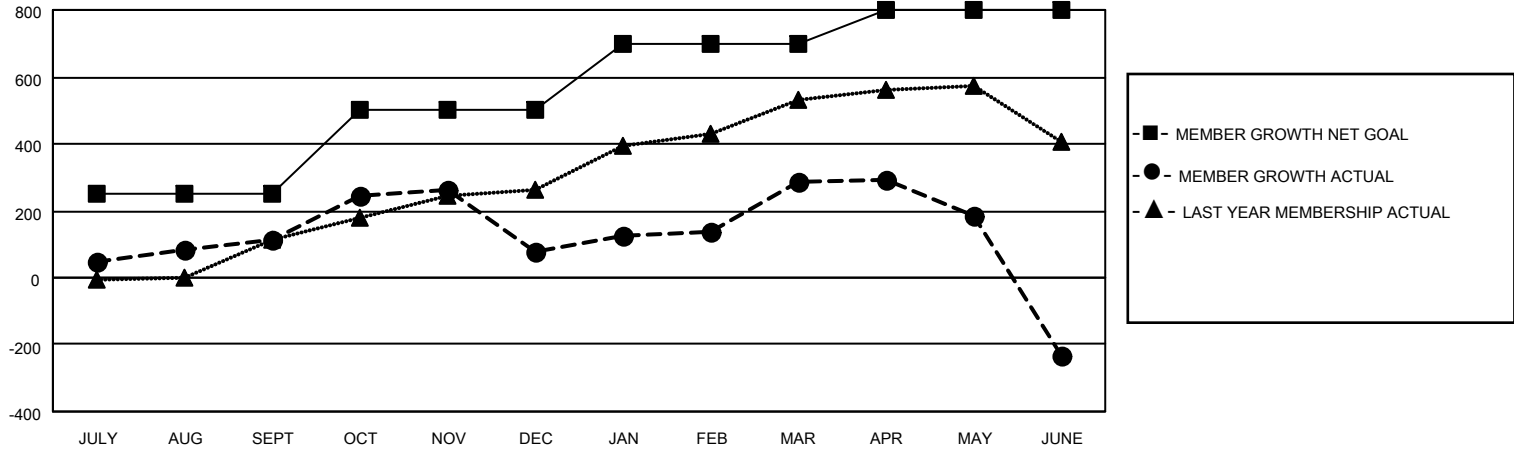
Clubs			
RESULTS FOR 2022-2023			
QUARTER	NEW CLUB GOAL	NEW CLUBS	DROPPED CLUBS
JULY/AUG/SEPT	4	3	1
OCT/NOV/DEC	5	5	3
JAN/FEB/MAR	3	5	2
APR/MAY/JUNE	3	0	2

Members			
RESULTS FOR 2022-2023			
QUARTER	MEMBER GROWTH NET GOAL	MEMBER GROWTH ACTUAL	DROPPED MEMBERS ACTUAL (including transfers)
JULY/AUG/SEPT	250	255	133
OCT/NOV/DEC	250	288	286
JAN/FEB/MAR	200	369	139
APR/MAY/JUNE	100	116	620

GOALS AND ACTUAL NEW CLUBS CUMULATIVE



GOALS AND ACTUAL MEMBERS CUMULATIVE



DROPPED CLUBS: 8	
DROPPED MEMBERS	
DECEASED	25
CLUB CANCELLED	183
OTHER	970
TOTAL	1,178

126 CLUBS OF 180 ADDED 1 OR MORE NEW MEMBERS

[CLICK HERE FOR CUMULATIVE MEMBERSHIP DATA](#)

<u>GENDER DISTRIBUTION</u>	
MALE	4,760 (78.34%)
FEMALE	1,316 (21.66%)
NON BINARY	0 (0.00%)
PREFER NOT TO ANSWER	0 (0.00%)
TOTAL FAMILY UNIT MEMBERS	2,223
FAMILY MEMBERS PAYING HALF DUES	1,172